

ROLA Information



6/2022

Vienna, April 2022

ROLA-Safety information

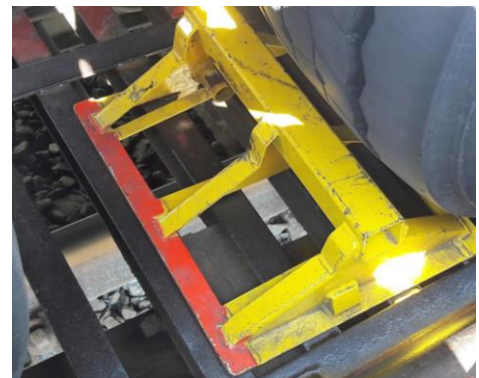
Use and storage of wheel chocks

Every truck on the ROLA must be secured with 4 chocks to prevent it from rolling away after loading onto the wagon.

The chocks are located on the side of the train wagon and must be attached and removed by the truck drivers themselves. The securing of the truck is checked by the ROLA loading staff before the train departure and corrected if necessary.

Upon arrival at the destination terminal and before starting the truck engine, all four wedges must be removed! Chocks that are not removed will cause damage to your truck, our wagons and pose a safety hazard.

After removing the wheel chocks, storing them on the wagon and with fully lifted truck suspension it can safely leave the ROLA wagons.



If you have any questions, please send us an email to rola@railcargo.com.

Have a good trip,
your ROLA Team